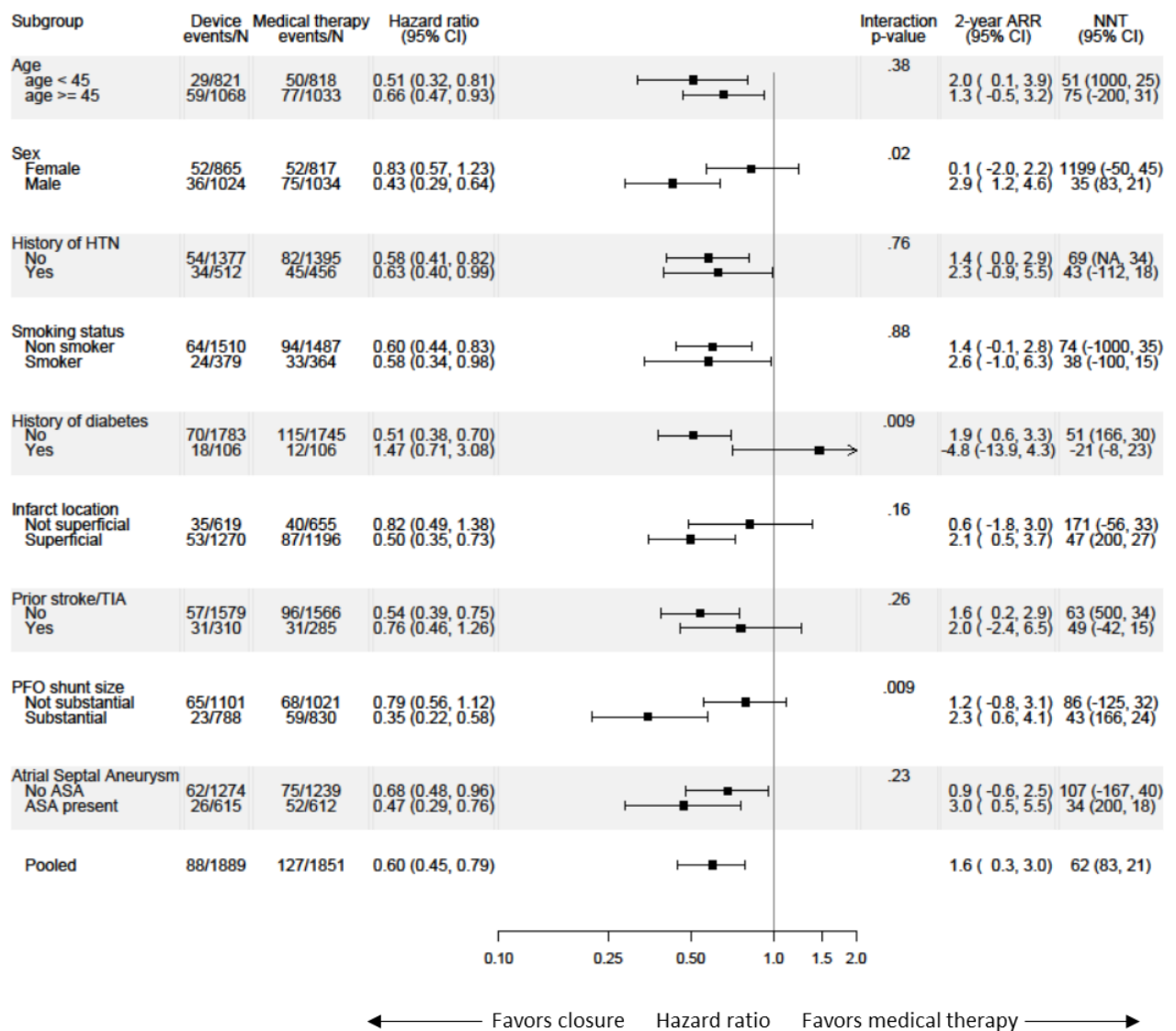


Appendix Figure 6. Secondary Outcome Exploratory Subgroup Analyses.



Legend:

Secondary outcome recurrent ischemic stroke, TIA, or vascular death. HR accounting for: age, sex, prior myocardial infarction, diabetes, hypertension, hyperlipidemia, prior stroke or TIA, smoking status, index event (stroke versus TIA), atrial septal aneurysm on trans-esophageal echocardiography (definition in Appendix A5), PFO shunt size (large versus small, definition in Appendix A5) and superficial infarction on neuroimaging (present versus absent). 2-year ARR calculated as differences in Kaplan Meier event rates at two years. Note: p-values from exploratory analyses are provided for descriptive purposes.

ARR, absolute risk reduction; CI, confidence interval; HR, hazard ratio; NNT, number-needed-to-treat.