

Forest plots for review question: What antiseizure therapies (monotherapy or add-on) are effective in the treatment of tonic or atonic seizures/drop attacks?

This section includes forest plots only for outcomes that are meta-analysed. Outcomes from single studies are not presented here, but the quality assessment for these outcomes is provided in the GRADE profiles in appendix F.

Comparison 2: add-on low-dose clobazam versus add-on high-dose clobazam

Figure 2: Reduction in seizure frequency >50%

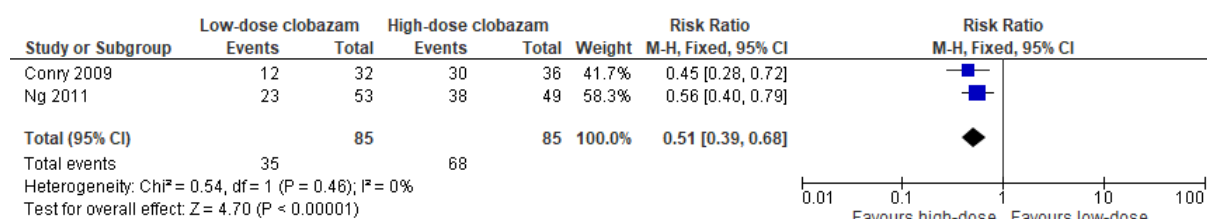


Figure 3: % of patients with reported severe side effects

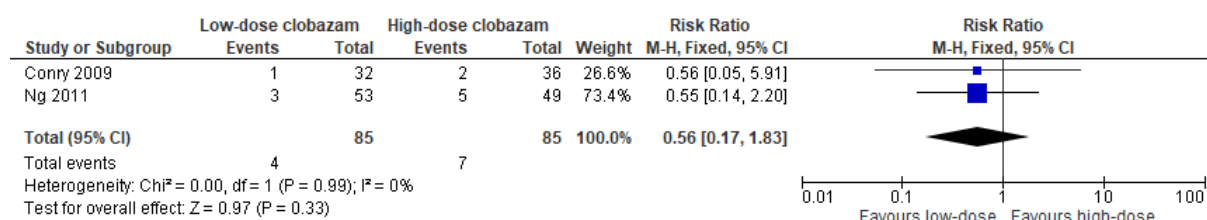
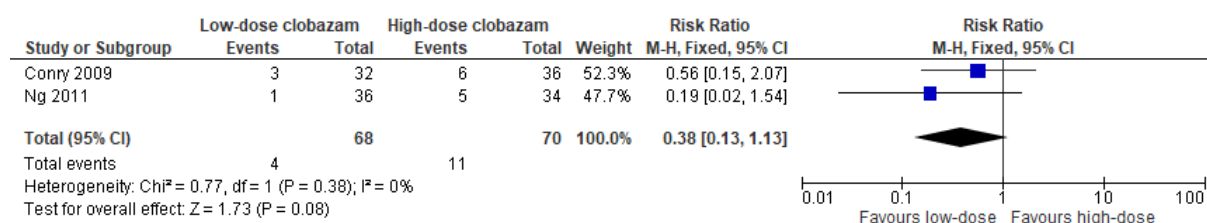


Figure 4: Treatment cessation due to adverse drug effects



Comparison 4: add-on rufinamide versus placebo

Figure 5: Reduction in seizure frequency >50%

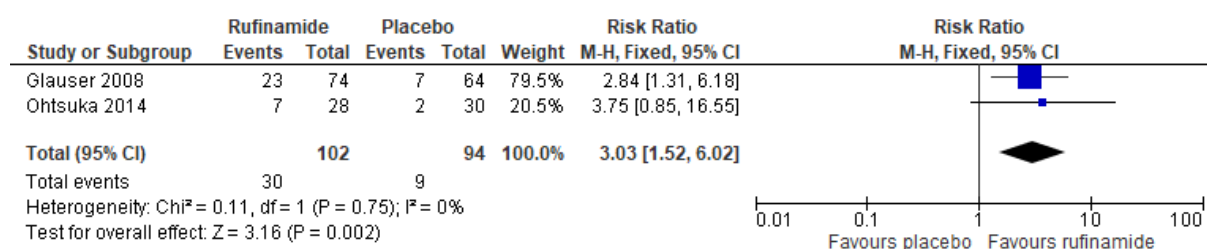
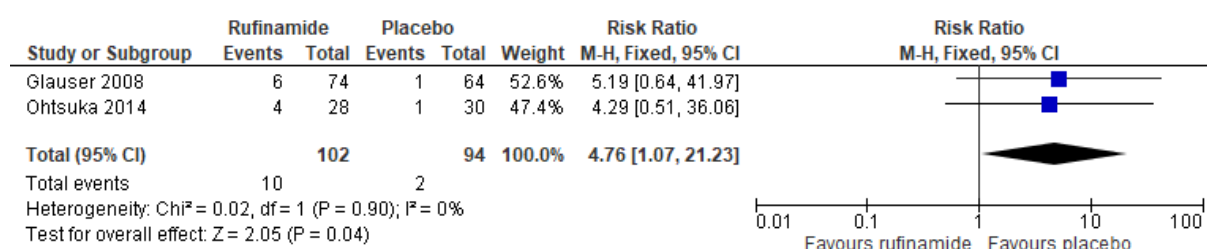


Figure 6: Treatment cessation due to adverse drug effects**Figure 7: % of patients with reported serious side effects**