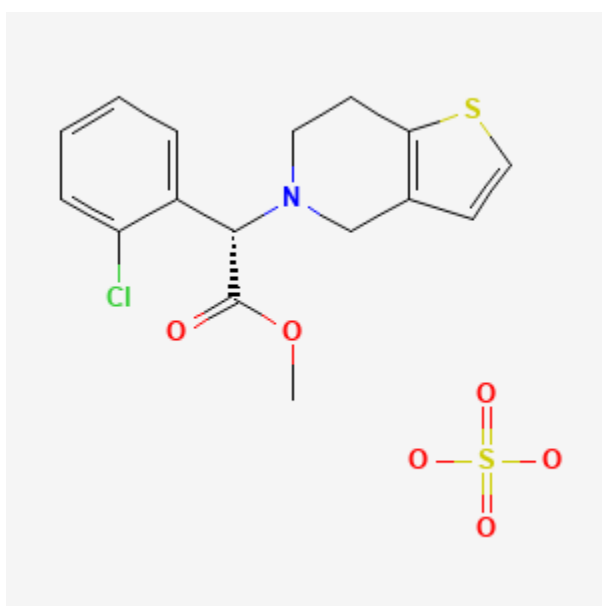




## Clopidogrel

Revised: June 15, 2025.

CASRN: 120202-66-6



## Drug Levels and Effects

### Summary of Use during Lactation

Information from two mothers indicates that minute quantities of clopidogrel and its metabolites are excreted into milk and one breastfed infant had trivial serum levels. Two mothers and the manufacturer reported that no adverse effects have been observed in breastfed infants with maternal clopidogrel use during lactation in two cases. If a mother requires clopidogrel, it is not a reason to discontinue breastfeeding, but monitor the infant for bruising or bleeding.

**Disclaimer:** Information presented in this database is not meant as a substitute for professional judgment. You should consult your healthcare provider for breastfeeding advice related to your particular situation. The U.S. government does not warrant or assume any liability or responsibility for the accuracy or completeness of the information on this Site.

**Attribution Statement:** LactMed is a registered trademark of the U.S. Department of Health and Human Services.

## Drug Levels

*Maternal Levels.* Milk samples were obtained over a 24-hour period from two nursing mothers who were taking clopidogrel 75 mg daily. In the first patient, milk collections were done at 7 and 9 months postpartum. At 220 days months postpartum, clopidogrel concentrations ranged from 0.03 to 1.11 mcg/L, clopidogrel carboxylic acid concentrations ranged from 1.5 to 22.44 mcg/L and clopidogrel active metabolite concentrations were below the limit of quantification (<0.008 mcg/L). At 288 days postpartum, clopidogrel concentrations ranged from 0.42 to 10.46 mcg/L, clopidogrel carboxylic acid concentrations ranged from 1.25 to 36.32 mcg/L and clopidogrel active metabolite concentrations were below the limit of quantification (<0.008 mcg/L) in 5 samples and 0.18 mcg/L in 1 sample. In the second patient, milk samples taken at 435 days postpartum, clopidogrel concentrations ranged from 0.02 to 1.69 mcg/L, clopidogrel carboxylic acid concentrations ranged from 1.43 to 26.96 mcg/L and clopidogrel active metabolite concentrations were below the limit of quantification (<0.008 mcg/L). Relative infant dosages averaged 0.008% for clopidogrel and 0.071% when the two metabolites were included.[1]

*Infant Levels.* An infant aged 14 months was partially breastfed by a mother taking clopidogrel 75 mg daily. A blood sample was obtained from the infant. The concentrations in the infant blood sample were clopidogrel <0.01 mcg/L, CAMD <0.01 mcg/L, and clopidogrel carboxylic acid 0.05 mcg/L.[1]

## Effects in Breastfed Infants

Two infants aged 7 to 14 months were partially breastfed by mothers taking clopidogrel 75 mg daily. No adverse health issues were reported for either infant by their mothers.[1]

## Effects on Lactation and Breastmilk

Relevant published information was not found as of the revision date.

## Alternate Drugs to Consider

Aspirin

## References

1. Van Neste M, Nauwelaerts N, Mols R, et al. Clopidogrel transfer into human milk: Case series – a contribution from the ConcePTION project. *Front Pharmacol* 2025;16:1499243. PubMed PMID: 40235546.

## Substance Identification

### Substance Name

Clopidogrel

### CAS Registry Number

120202-66-6

### Drug Class

Lactation

Breast Feeding

Milk, Human

Platelet Aggregation Inhibitors

Purinergic P2Y Receptor Antagonists