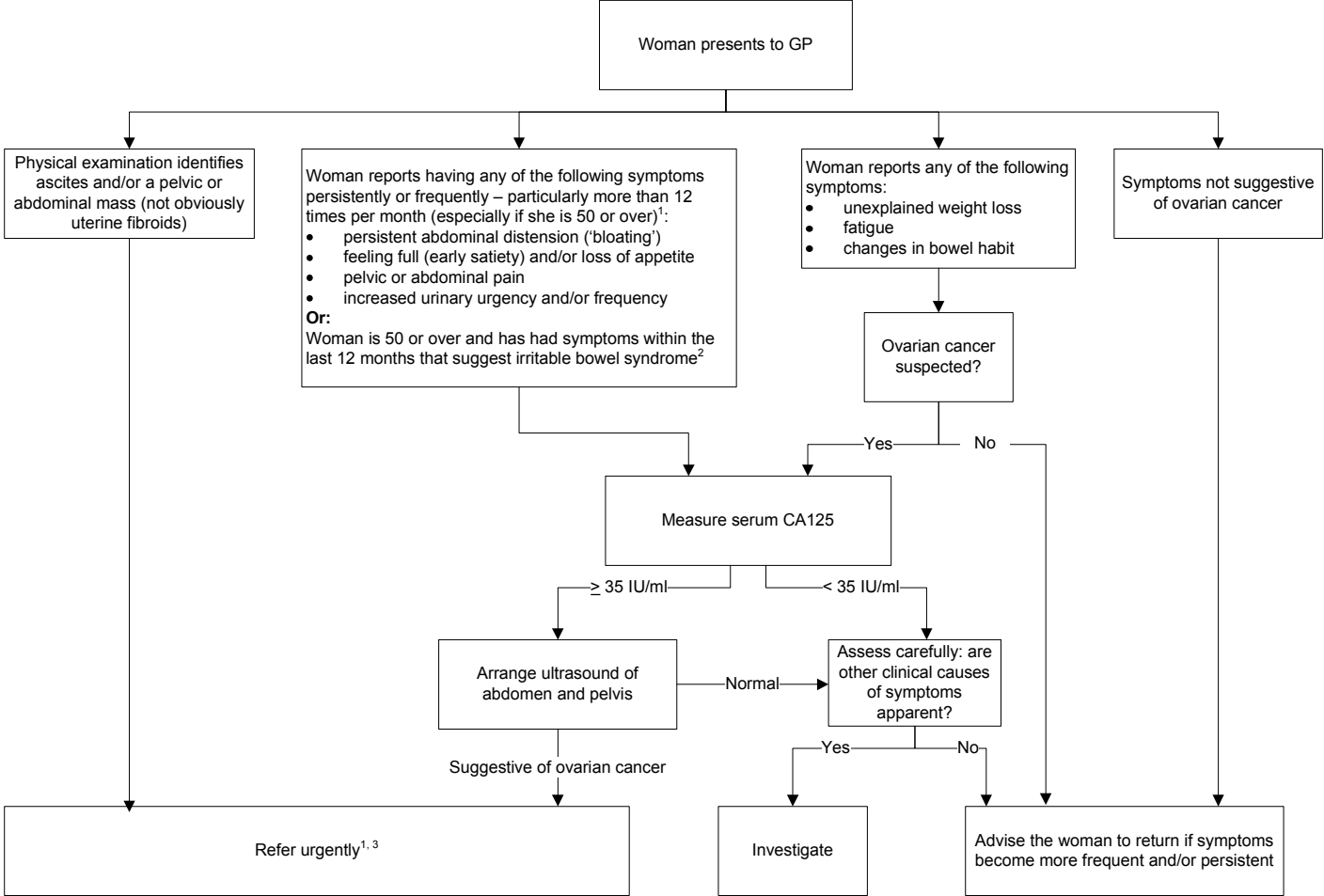


# Detection in primary care



<sup>1</sup> See also 'Referral guidelines for suspected cancer' (NICE clinical guideline 27; available at [www.nice.org.uk/guidance/CG27](http://www.nice.org.uk/guidance/CG27)) for recommendations about the support and information needs of people with suspected cancer.

<sup>2</sup> See 'Irritable bowel syndrome in adults' (NICE clinical guideline 61; available at [www.nice.org.uk/guidance/CG61](http://www.nice.org.uk/guidance/CG61)). Irritable bowel syndrome rarely presents for the first time in women of this age

<sup>3</sup> An urgent referral means that the woman is referred to a gynaecological cancer service within the national target in England and Wales for referral for suspected cancer, which is currently 2 weeks.